

Brilliant Crystal



La musica dell'Opéra di Parigi riaffiora alla mente evocata dalle linee sfarzose di questa maniglia in stile Luigi XIV.

The music of the Paris Opéra comes to mind evoked by the lavish lines of this handle in the Louis XIV style.

made in Italy | patented design

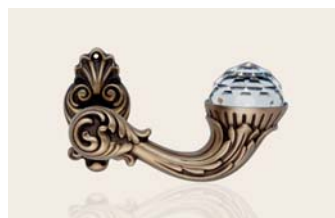




oro francese
french gold
OF



oro zecchino
gold plated
OZ

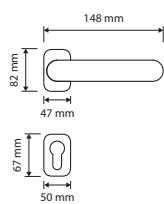


patiné
patiné mat
PM

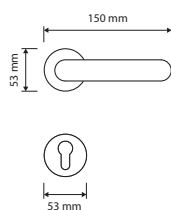
modelli / models



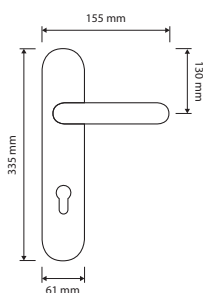
1526 RB 015



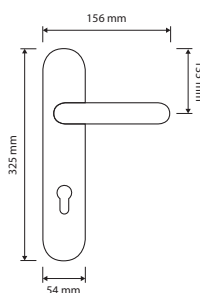
1526 RB 113



1531 PL



1526 PL



1530 PL

